



**Environment and Community Panel**  
**Tuesday, 9th April, 2024 at 4.30 pm**  
**in the Council Chamber, Town Hall, Saturday Market  
Place, King's Lynn PE30 5DQ**

**Reports marked to follow on the Agenda and/or Supplementary  
Documents**

1. **Homelessness and Rough Sleeping Strategy Review - 30 minutes**  
(Pages 2 - 13)

**Contact**

Democratic Services  
Borough Council of King's Lynn and West Norfolk  
King's Court  
Chapel Street  
King's Lynn  
Norfolk  
PE30 1EX  
Tel: 01553 616394  
Email: [democratic.services@west-norfolk.gov.uk](mailto:democratic.services@west-norfolk.gov.uk)

# Homelessness Review

## Briefing for Environment and Communities Committee

### April 2024



# Why did we do a review?

- **Legal requirement** to develop a fresh Homelessness and Rough Sleeping Strategy every five years. (Good practice regardless).
- ω • **Major changes** to the economy, to society and to the housing market in the last five years.
- Strategy needs to be led by **data** and **professional and lived** experience

# How did we carry out the review?

## QUANTITATIVE DATA

Over 2,600 council records  
↳ from four years  
  
...plus partner data

## QUALITATIVE DATA

Questionnaire to local  
partners  
  
Group sessions

## LIVED EXPERIENCE

Group sessions with  
people with current / past  
lived experience of  
homelessness



# Key findings

- **Homeless applications doubled** between 2020-2022 due to increases in:

5

**Private Rented  
Sector** tenancies  
ending

People fleeing  
**domestic abuse**

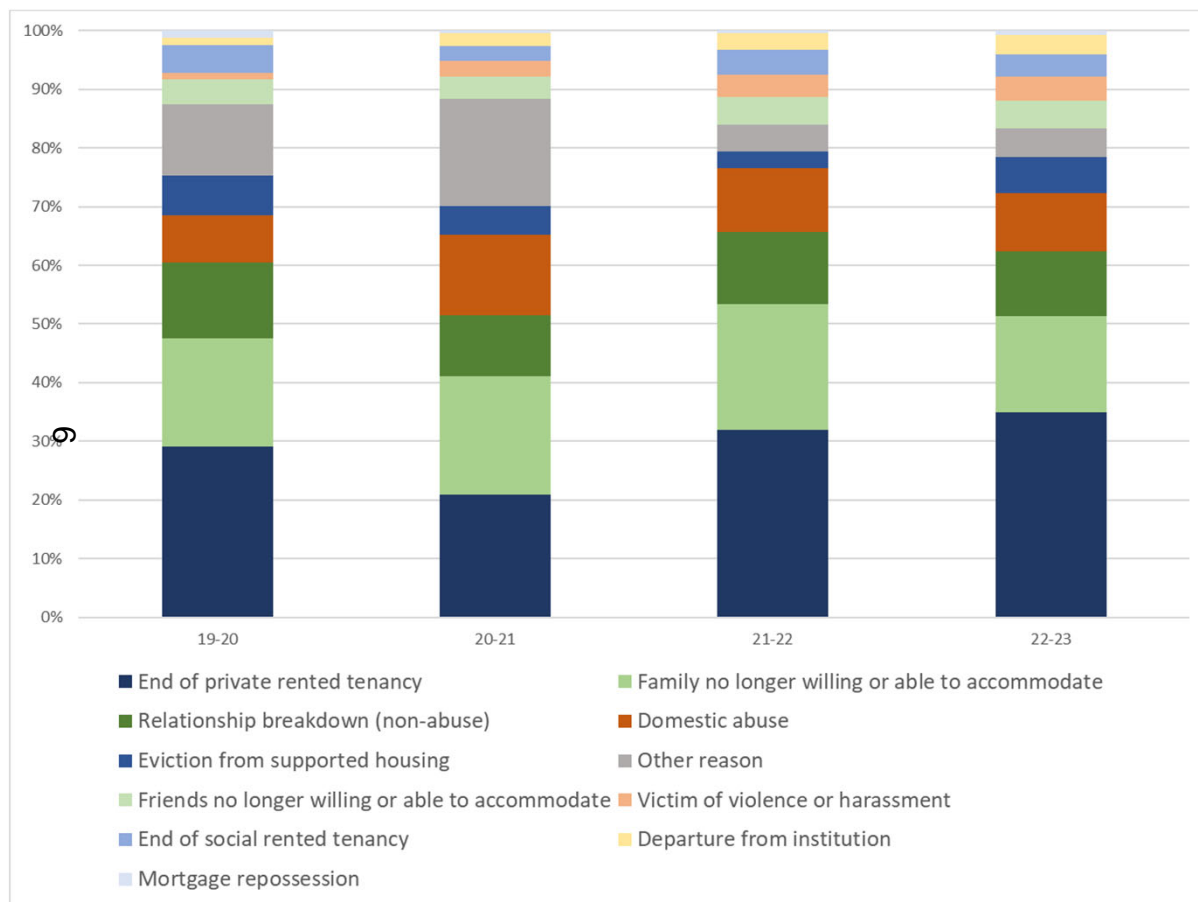
Proportion of  
**households with  
children**

Proportion of  
**working  
households**

- A greater number of **applicants with multiple support needs**
- **Rough sleeping reduced** during the term of the last strategy and has remained relatively low (when compared with other boroughs in the region)



# Reason for homeless approaches



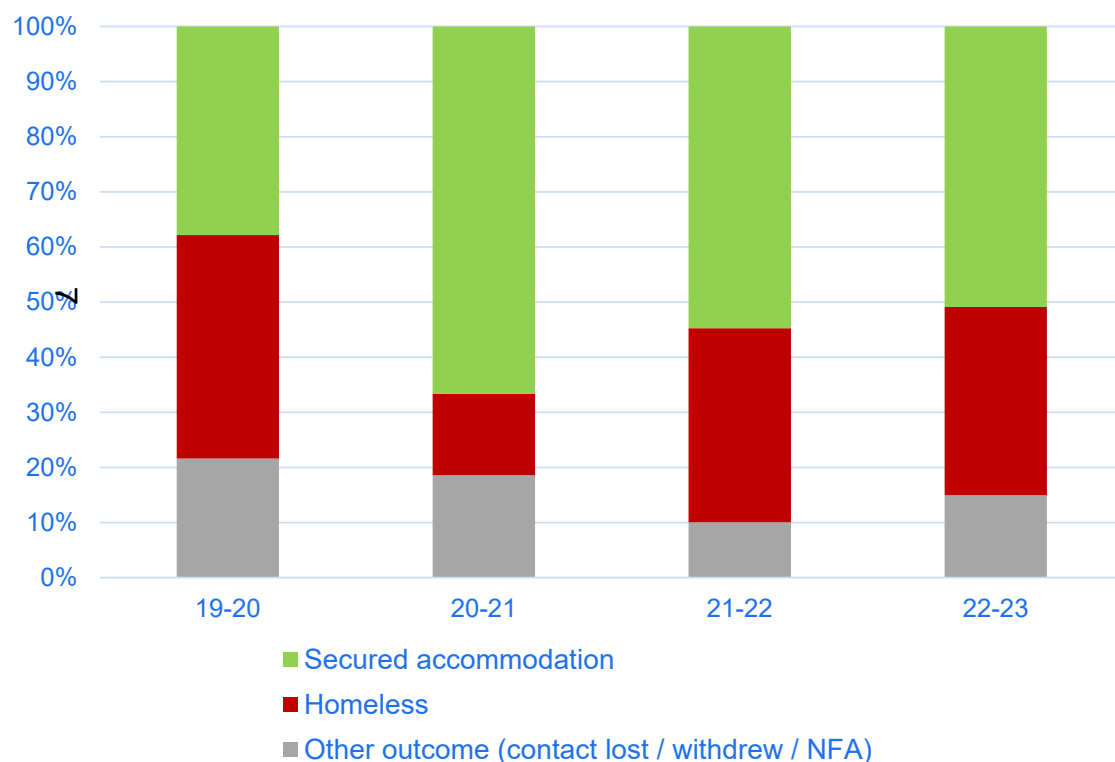
Reason for homelessness approach, by financial year  
April 2019 to March 2023. BCKLWN

## Key increases:

- **End of PRS tenancy**
  - Demand
  - Supply
  - Accessibility
- **Domestic abuse**

Reduction in relationship  
breakdown / family evictions

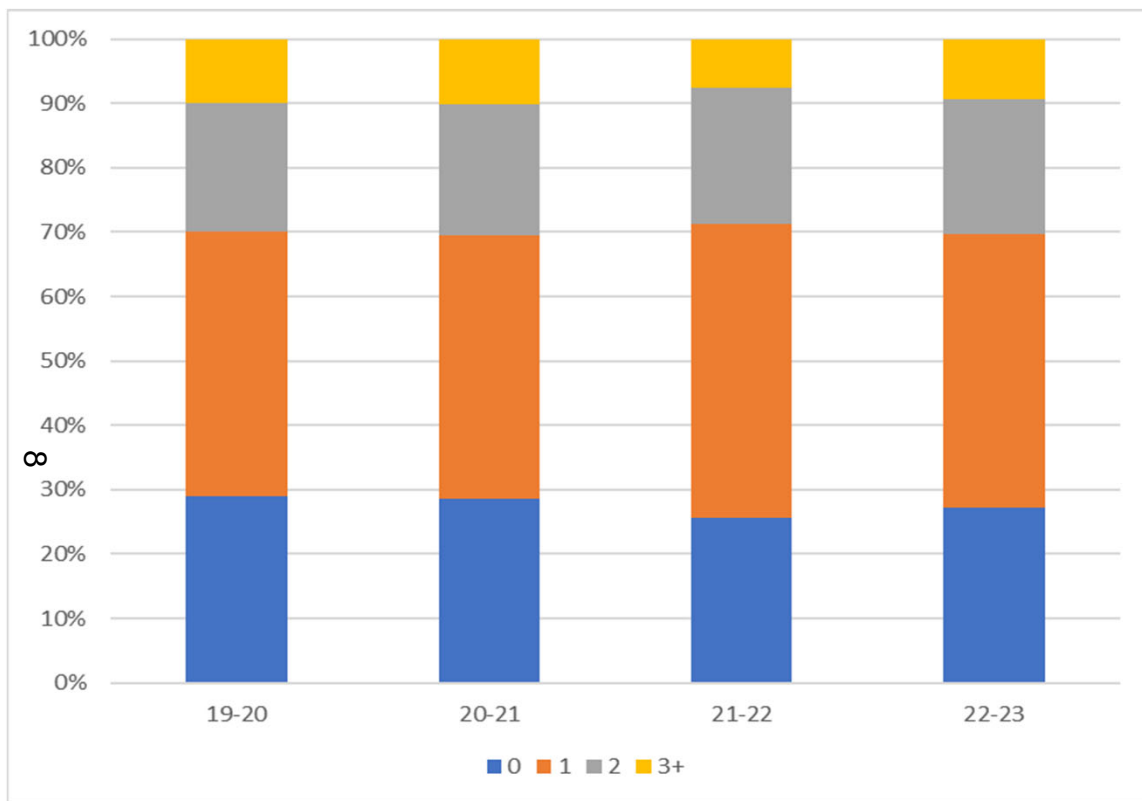
# Outcome of approaches



- **Higher proportion of prevention outcomes in 22/23 compared with 19/20**
- **Eroding levels of success since 20/21**

Outcome of Prevention Duty – April 2019 to March 2023. BCKLWN

# Complexity of approaches?

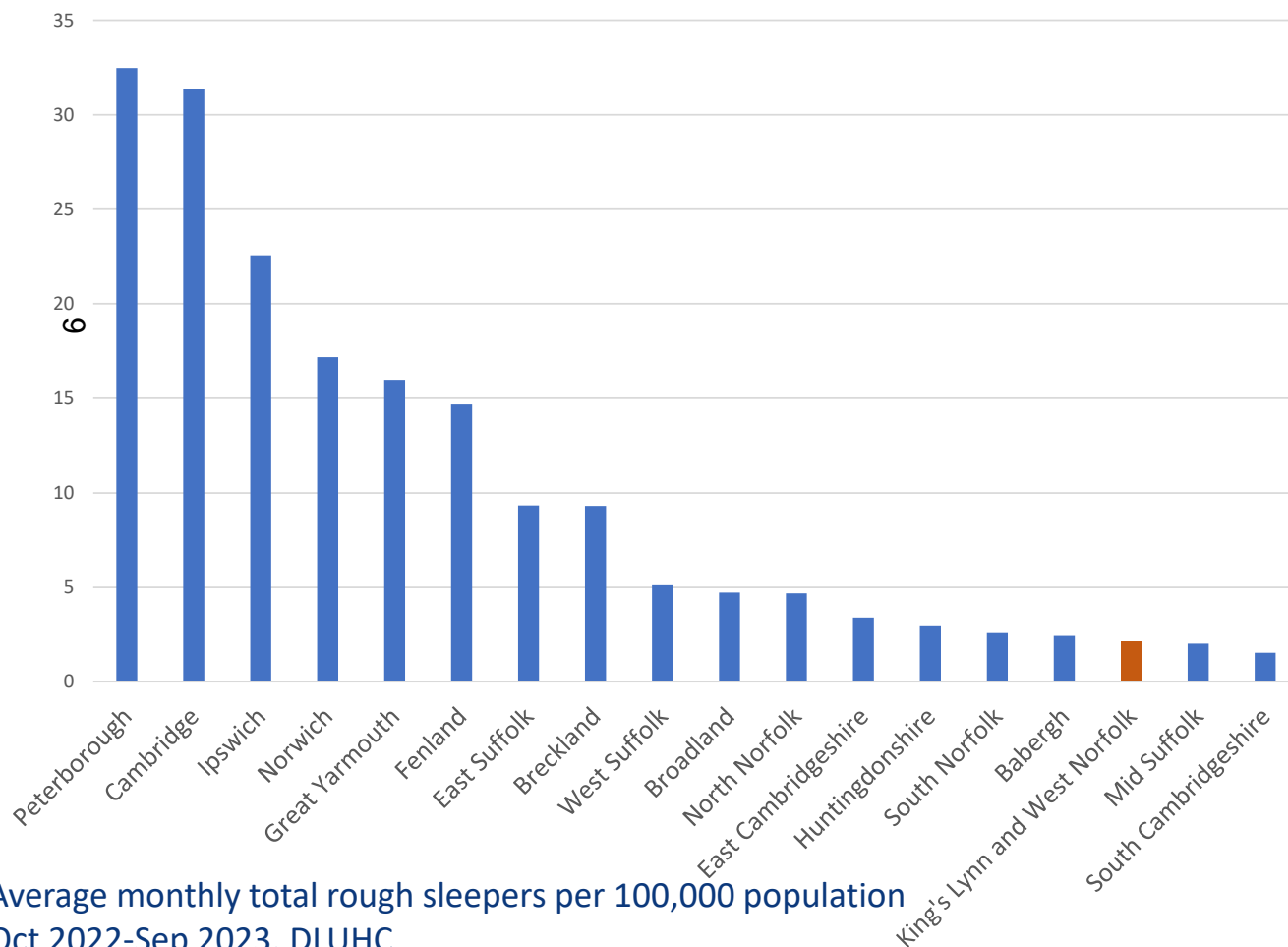


- **Proportion of support needs** relatively stable.
- However, could be due to:
  - Increase in numbers
  - Decrease in support
  - Possible under-reporting?

Number of recorded support needs by application.  
April 2019 to March 2023. BCKLWN.



# Rough Sleeping

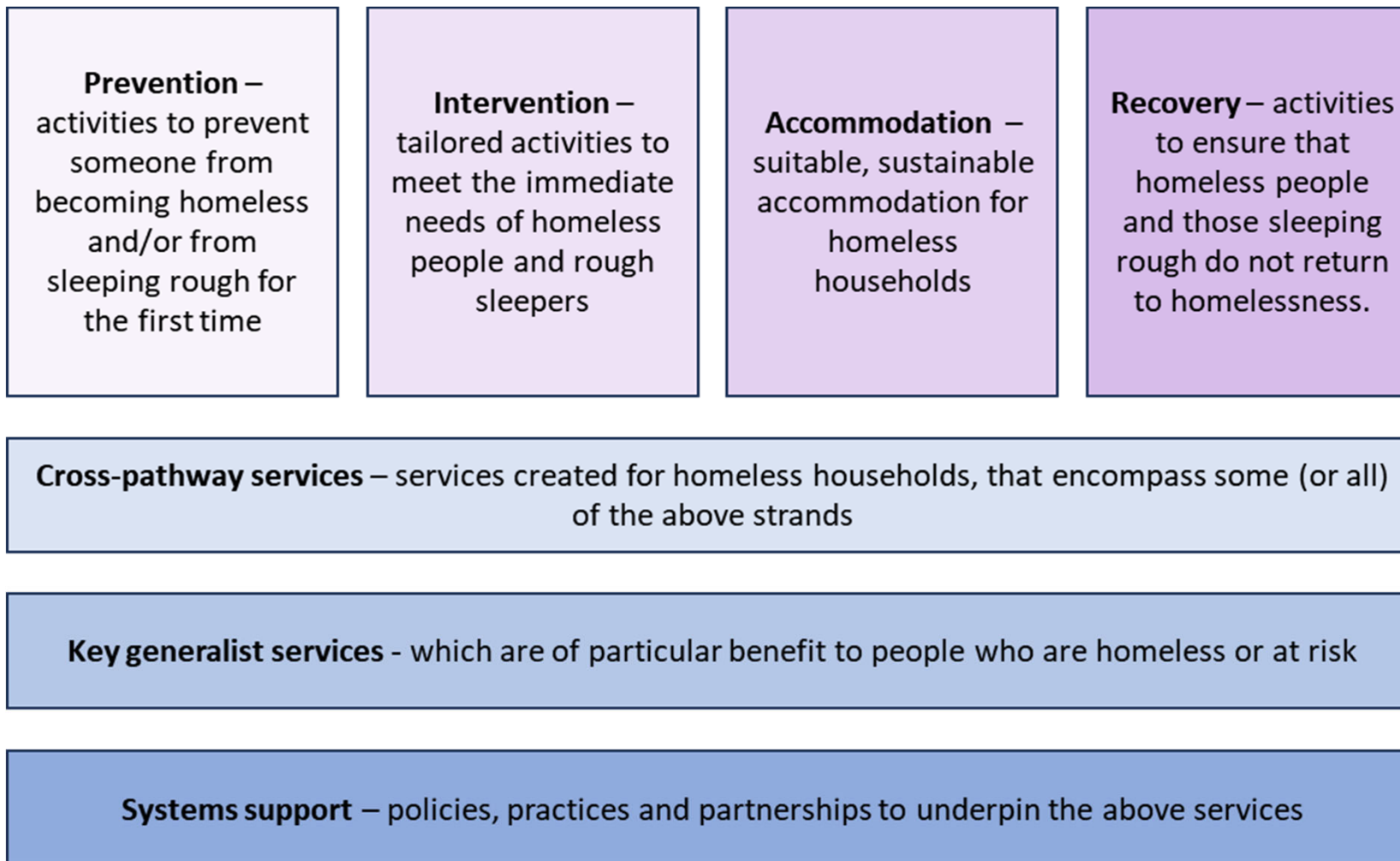


- Compared with other authorities in the region, rough sleeping levels (per 100,000 population) are low.
- Numbers have reduced in lifetime of strategy with some seasonal fluctuations

Average monthly total rough sleepers per 100,000 population  
Oct 2022-Sep 2023. DLUHC

# Services available

10



# Key findings

## STRENGTHS

- Partnership working to prevent homelessness
- Diverse 'off-the-street' offer for people sleeping rough.
- A strong focus on wellbeing.
- A flexible culture with an emphasis on communication

## CHALLENGES

- Prevention does not always happen early enough
- Overuse of expensive bed and breakfast / nightly-paid accommodation
- Lack of accommodation, partly due to high levels of void properties

## GAPS

- Lack of specialist mental health and substance use outreach
- Access to Private Sector; insufficient high needs housing e.g. Housing First
- Co-production with people with lived experience – also “communication gap”



# Service Evaluation – summary

- A **clear focus on prevention** within the partnership, but the effectiveness of the partnership **appears to be ebbing away** due to significant external influences.
- A **strong and varied “off-the-street” offer** to people sleeping rough or at risk, but the **cost of accommodating homeless households** is unsustainably expensive.
- A **clear impact of new services** across the pathway, but many of these services are **vulnerable to future reductions** in central government funding.
- **Strong informal partnerships** between services, but a need for a stronger “whole system” vision with a **wider net of service**.
- **Strong individual outcomes**, but a **clear gap** between some key services and the people that they serve.

12

# Next Steps

**April 2024**  
Presented to E&C  
13

## July 2024

- Key themes presented.
- Check-back with partners
- Councillor briefings

**October 2024  
(TBC)**  
Cross-partnership  
launch event

## April to June 2024

Development of strategy:

- Partners
- Lived Experience
- “Wider net” of community partners
- Council staff
- Task Group

## Autumn 2024 (date TBC)

Formal adoption  
by council